

# GuardPoint Pro OPC Server User Guide

## The OPC Standard

The OPC standard defines common interfaces for the data exchange between devices, PLC's and Windows applications.

### OPC

The OPC standard has been introduced by a group of major USA companies, active in the PLC and visualization market. OPC defines an open industry-standard interface based on OLE and ActiveX technology that provides interoperability between different field devices, automation/control and business systems.

The OPC specification defines a set of interfaces for easy to use objects including methods and properties to manipulate these objects.

The basic transport layer for OPC is DCOM and therefore, a Man-Machine Interface (MMI) or supervisory control and data acquisition (SCADA) software package can process and collect data from OPC servers that are running on different computers on the network.

The specification also defines a standard mechanism to access named data items contained in an OPC server. Hardware and software developers use the specification to build OPC servers and clients which can exchange information over a network between a wide range of system applications, including distributed control systems (DCS), SCADA systems, PLC's, distributed I/O systems and smart field devices.

The OPC Data Access Specification version 1.0 was released in August 1996. A corrected version 1.0A appeared in 1997. Version 2.0 followed in late 1998, with major changes in the Automation interface.

### Why OPC?

In the automation industry very often devices from different hardware suppliers and software packages like visualization systems and process-control software from several software suppliers have to be combined to build a complete system.

Within this system the different software components need to communicate.

The application software should communicate with I/O devices as well as other applications.

Getting the different software modules to work together is the biggest problem for process systems manufacturers.

These problems are due to missing or incompatible standards for data exchange interfaces. In the past vendors have developed proprietary hardware and software solutions. All process-control and information systems today have their own interface to access the information. Often a driver for one I/O device was written several times by different vendors.

This can cause inconsistencies among different custom drivers or upgrades

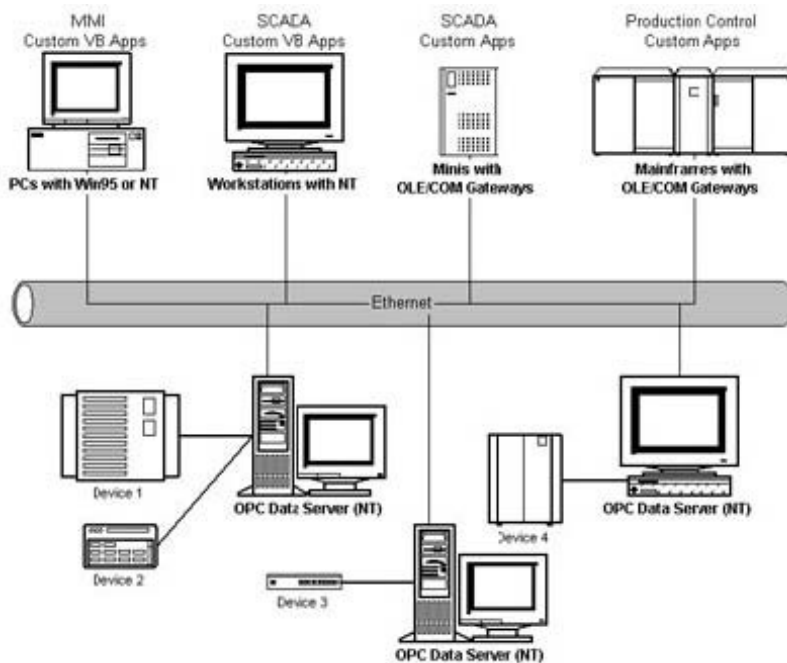
It may also be impossible to use different software packages with one device at the same time because they use independent drivers and hardware features that are not supported by a custom driver.

# GuardPoint Pro OPC Server User Guide

In the past hardware vendors tried to solve some of these problems by delivering their own drivers. The solution today is having a standard plug-and-play software technology for process-control and automation.

Having such a standard makes it possible that different software packages can freely connect and communicate with different devices.

This results in a truly open and easy enterprise-wide communication between systems and devices on the field, process or business management hierarchy.



# GuardPoint Pro OPC Server User Guide

## **What is OPC?**

OPC stands for OLE for Process Control (OLE = Object Linking and Embedding). OLE has been restructured in the past and renamed to ActiveX. OPC is an industry standard created by a number of worldwide leading hardware and software suppliers in cooperation with Microsoft. OPC is based on OLE (now ActiveX), COM (Component Object Model) and DCOM (Distributed Component Object Model) technology and is available for all 32-bit Windows Operating Systems from Microsoft. The port of DCOM to other OS makes it possible to integrate Linux and Unix systems as well. OPC defines a standardized set of interfaces, properties and methods for use in process-control and automation software applications. The primary goal of OPC is to deliver specifications to the industry. Currently the following specifications are available:

Data Access V2.0

Alarms and Events Custom Interface V1.0

Historical Data Access V1.0.

## **What is COM?**

The 'Component Object Model' provides interfaces and inter-component communication. Through COM, an application may use features of any other application object. COM is the core of DCOM, ActiveX and OLE.

What is OLE?

Object Linking and Embedding is used to provide integration among applications and allows the development of reusable objects that are interoperable between multiple applications. It also provides reusable, component-based software solutions, where as the software-components can be written in any language.

## **What is DCOM?**

The Distributed Component Object Model extends COM to work over a network. It is a protocol where remote components appear to be local.

What is ActiveX?

ActiveX is an open, integrated platform for portable applications and interactive content for the World Wide Web.

# GuardPoint Pro OPC Server User Guide

## GuardPoint Pro OPC General Information

The goal is to integrate GuardPoint Pro into SCADA architecture for management and Access Control through the OPC standard.

OPC Client can get the following information

Communication status of controller (Com OK or Comm. Error)

Logical status of all inputs. Open/ Close but depending NO/NC.

Physical status of all relays. Open /Close.

- All GuardPoint Pro events. Such as:
  - o Access Granted, Denied, Granted with duress code, Denied too much trials
  - o Start of Alarm / End of Alarm
  - o Technical alarms. Such as: power off, table error ...
  - o Unknown badge

An OPC Client can operate the following operations in GuardPoint Pro:

- Relay control
  - o Open constant ON
  - o Constant OFF
  - o Open during x sec
  - o Return to normal mode
- Inputs
  - o Input deactivation
  - o Return to normal mode

Execute GuardPoint Pro Processes

Execute GuardPoint Pro Actions

Open GuardPoint Pro Screens

### How does it work?

OPC is working with “tags”. On each tag, an alarm can be defined in OPC Clients to show a popup alarm a message, to play a sound, to send SMS...

GuardPoint Pro creates OPC tags and publishes them. The tags values are available for all OPC Clients. OPC Clients can modify some of the tags’ values.

When the GuardPoint Pro application starts running, OPC tags are created. When creating a new active controller, all the associated tags are also created. The tags are not updated when renaming an object or adding a description.

It is possible to create global and local reflexes by defining actions and processes in GuardPoint Pro and execute them using OPC tags.

It is also possible to create local reflexes in the OPC client and activate relays by OPC tags.

To enable the OPC Integration you need the following:

- 1) In the ‘Options’ screen select the “OPC Server activation”
- 2) Make sure the plug configuration includes the letter O.

# GuardPoint Pro OPC Server User Guide

## Technical Tag names definitions:

The description field (Descr) in GuardPoint Pro is used to allow users to define their own tag name.

Note: According to the OPC standard, a tag may have different properties. The first 6 properties are reserved by the OPC protocol. Therefore, we are always using tag property number 7 to give the tag description.

In most cases, the object name (controller, reader, input...) that is used in the GuardPoint Pro application is also

used as the OPC tag property. In order to get the description of the tag use the "ReadPropertyValue" function of the OPC Interface

For further details, see your OPC Client documentation.

In the remaining of this document:

'<IDc>' represents the text in the field 'Description' of the controller. If this field is empty, the system will use an ID number.

'<IDi>' represents the text in the field 'Description' of the input. If this field is empty, the system will use the Input Number.

'<IDo>' represents the text in the field 'Description' of the output (relay). If this field is empty, the system will use the Output (relay) Number.

'<IDr>' represents the text in the field 'Description' of the reader. If this field is empty, the system will use the reader Number.

The 'Type' column shows if the tag is a 'read only' tag ('R') or a write only one ('w')

# GuardPoint Pro OPC Server User Guide

Tag Name	Type	Description	Values
<b>Tags linked to the Controller:</b>			
DDS_<IDc>	R	Communication status	0: Communication OK 1: Communication Problem
<b>Tags linked to the readers:</b>			
DDS_<IDc>_DR_<IDr>	R	Card transaction result	1: Access Granted 2: Access Granted (Duress Code) 3: Access Denied 4: Access Denied (Unsuccessful successive trials) 61: Unknown badge 63: Non Allocated Badge
<b>Tags linked to the inputs:</b>			
DDS_<IDc>_I_<IDi>	R	Input state (on alarm or not)	0: Input not on alarm 1: Input on alarm
DDS_<IDc>_A_<IDi>	R	Alarm	9: Start of alarm (delayed) 10: Start of Alarm (immediate) 11: End of Alarm 12: Input in State 1 13: Input in State 2 14: Input in State 3 15: Input in State 4 22: Table Error 23: Low Battery 24: Power Down
DDS_<IDc>_U_<IDi>	W	Input Mode control	0: According to its Event Weekly Prog. 1: Disarmed (Deactivated)
DDS_<IDc>_T_<IDi>	R	Input Mode	0: According to its Event Weekly Prog. 8: Disarmed (Deactivated)

# GuardPoint Pro OPC Server User Guide

<b>Tags linked to the outputs (relays):</b>			
<b>DDS_&lt;IDc&gt;_O_&lt;IDo&gt;</b>	R	Relay status	0: Off 1: On
<b>DDS_&lt;IDc&gt;_C_&lt;IDo&gt;</b>	W	Relay Control	0: Normal Mode 1: Constant OFF 2: Constant ON 3: Open During N seconds
<b>DDS_&lt;IDc&gt;_D_&lt;IDo&gt;</b>	W	Relay activation delay ('N')	From 01 to 120 (sec.)
<b>DDS_&lt;IDc&gt;_N_&lt;IDo&gt;</b>	R	Relay mode	1 : Normal Mode 6 : Constant ON 7 : Constant OFF
<b>Tags linked to any events:</b>			
<b>DDS_EVENTS_tt</b>	R	Events description: Card transaction result Or Alarm	- If card transaction result: Like for tag 'DDS_<IDc>_DR_<IDr>' -If Alarm: Like for tag 'DDS_<IDc>_A_<IDi>'
<b>DDS_EVENTS_tt_String</b>	R	Events description	Only the <b>text</b> values of the above options
<b>DDS_EVENTS_DATE_TIME</b>	R	Time and Date of the Events	Format Short Date and Short Time
<b>DDS_EVENTS_DEVICE_STRING</b>	R	Reader name for access event or input name for alarm event	
<b>DDS_EVENTS_CARD_STRING</b>	R	Full name (last & first) of the cardholder in GuardPoint Pro DB	
<b>DDS_EVENTS_REASON</b>	R	Reasons of the Denied According to Param.mdb Translation Database and the language settings. Value examples here are according to the English setting.	- Card Error - Inhibited Cardholder - Anti Pass Back - Wrong Keypad Code - Supervisor - Access Group - Reader not allowed - Full / Lock / No answer from Door - Site Code not ok - Not Authorized at this time

# GuardPoint Pro OPC Server User Guide

<b>Tags linked to Actions:</b>			
<b>DDS_ACTION</b>	W	Execute an Action	Action ID The updated list of the defined actions within GuardPoint Pro can be seen at 'GuardPoint Pro_Action_List.txt' in GuardPoint Pro application folder.
<b>Tags linked to Processes:</b>			
<b>DDS_PROCESS</b>	W	Execute a Process	Process ID The updated list of the defined processes within GuardPoint Pro can be seen at 'GuardPoint Pro_Process_List.txt' in GuardPoint Pro application folder.

<b>Tags linked to Screens:</b>			
<b>DDS_CFG</b>	W	Open an Amadeus 5 screen	<p><b>Parameter:</b> 11: Controller Network 12: Controller 13: Daily Program 14: Weekly Program 15: Holiday 16: Access Group 17: Department 18: Badge 19: Cardholder 110: Visitor 111: User 112: Authorization Levels 113: Configuration 114: Exit 115: Logoff 116: Computer 117: Company <b>Communication:</b> 41: Polling 42: Diagnostic 43: View Log 44: Clear Log 45: View Photo</p> <p><b>Event Handling:</b> 21: Icons 22: Map 23: Positions 24: Input Group 25: Output Group 26: Actions 27: Process 28: Counters 29: Global Reflex 210: Event Handling Program 211: Log <b>Manual Actions:</b> 51: Crisis Level 52: Output Status 53: Execute Process <b>Tolls:</b> 61: Reports wizard 62: Create New Database 63: Save Database 64: Restore Database 65: Create New Journal 66: Save Journal 67: Restore Journal 68: Create a group of Badges 69: Options 610: Import database profile</p> <p><b>Modules:</b> 31: Parking Lot 32: Parking Users Group 33: Parking Zone 34: Reset Parking Zones 35: Lift Program 36: Roll Call 37: Patrol Report 38: Guard 39: Lift Authorization group 310: Checkpoint 311: Patrol Tour Prog. 312: Patrol Tour Status <b>Help:</b> 71: Help Content 72: Help 73: Help Search 74: GuardPoint Pro on the web 75: About</p>



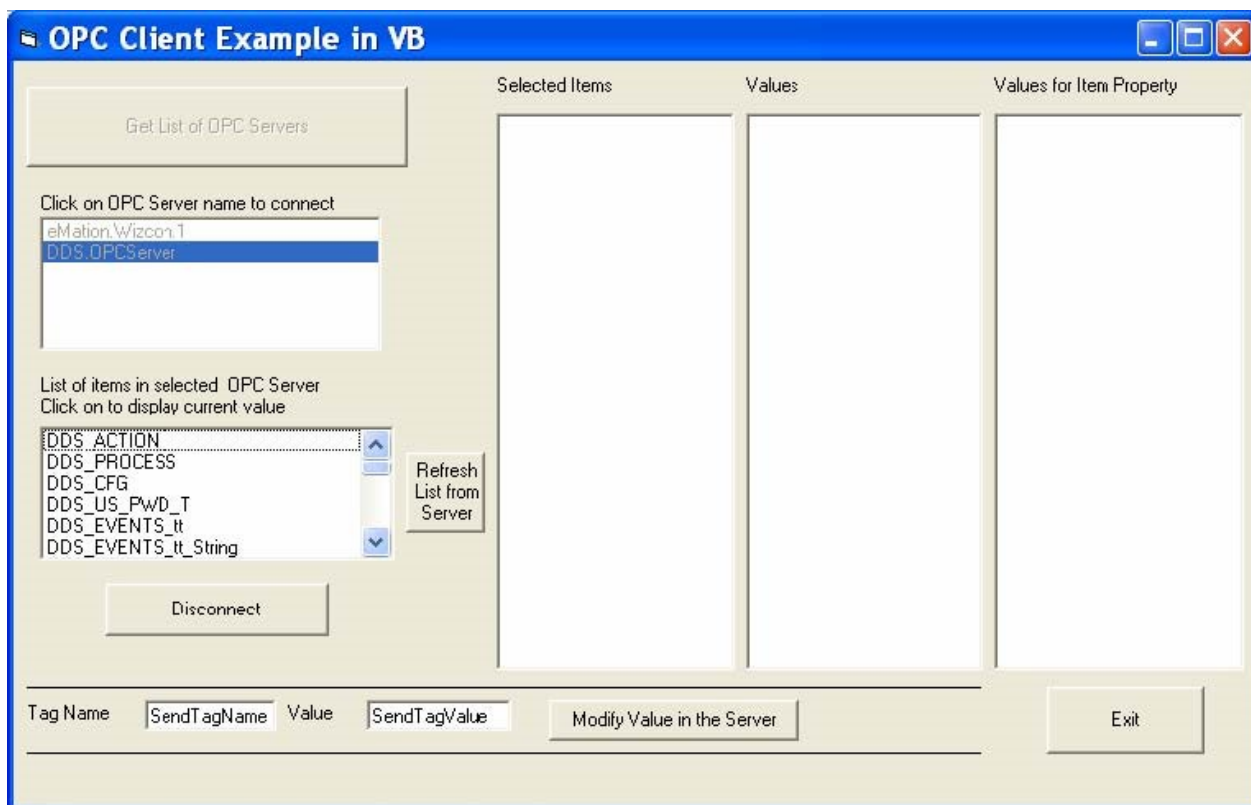
# GuardPoint Pro OPC Server User Guide

## OPC Client demo

In the GuardPoint Pro installation directory you can find an OPC Client demo application: "OPC Client.exe"

How to use the OPC client demo:

When GuardPoint Pro is running, execute this tool. This screen appears:



Pressing "Get List of OPC Servers", will display a list of all OPC servers running on the computer.

Click the "DDS.OPCServer" to get the OPC tags.

In order to get a tag value refreshed every second, click on one of the listed tags; the tag will be added to the "Selected Items" column. The tag values appear in the "Values" column.

A description of the tag is shown at the "Values of item property" right column.

For most tags the description is the name of the object in GuardPoint Pro application.

When a new active controller is created in the GuardPoint Pro application, the new tags are available when pressing on "Refresh List from Server".

Note: The frequency of refreshing is defined by the customer himself in his OPC Client. In our demo this frequency is every second

# GuardPoint Pro OPC Server User Guide

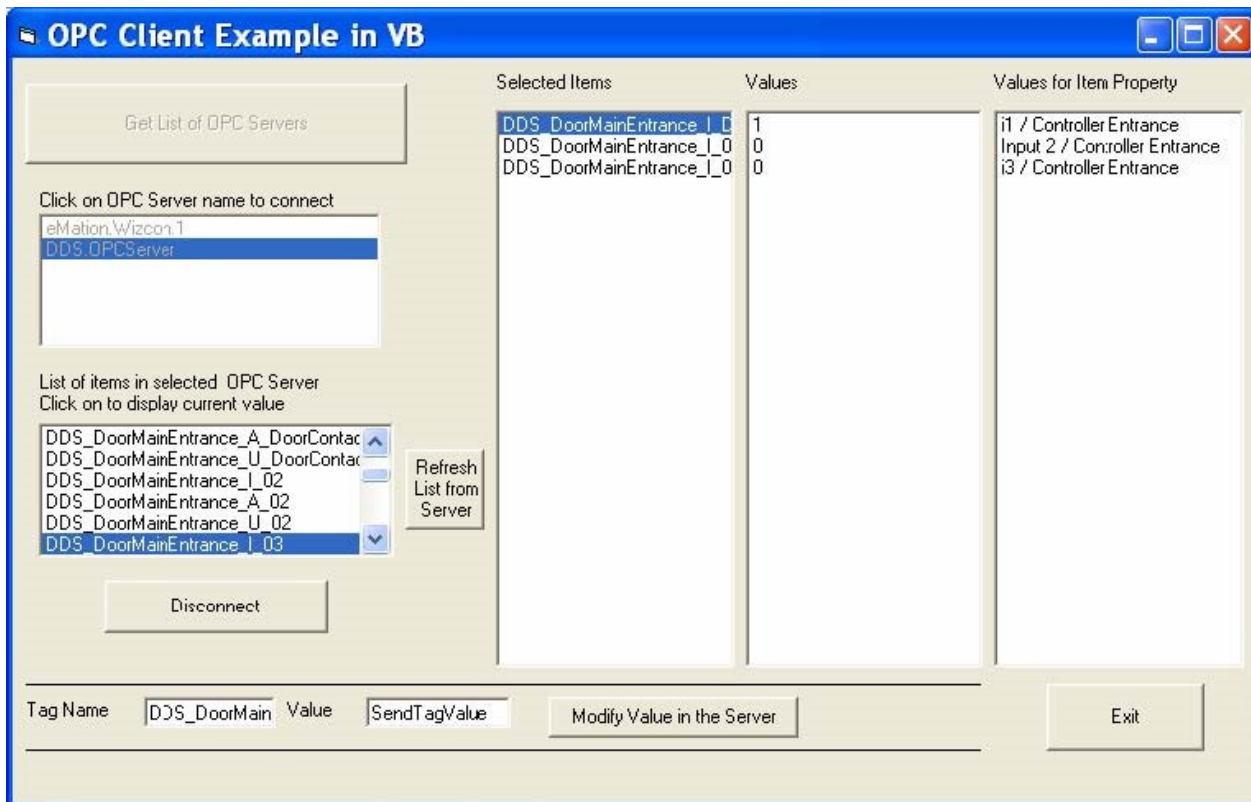
## Input Status Example

In the following examples we have called the first controller “Controller Entrance” and we have given it a description: “Door Main Entrance”.

The first input name is “i1 / Controller Entrance” and has “Door Contact” as description.

The second input name is “Input 2 / Controller Entrance” and has no description.

The third input name is “i3 / Controller Entrance” and has no description.



Selected Items	Values	Values for Item Property
DDS_DoorMainEntrance_I_01	1	i1 / Controller Entrance
DDS_DoorMainEntrance_I_02	0	Input 2 / Controller Entrance
DDS_DoorMainEntrance_I_03	0	i3 / Controller Entrance

In the example above, we have selected 3 inputs tags by clicking on each one of them in the tag list. Each tag is inserted in the “Selected Items” column. Every second, the OPC Client refreshes their value and publishes them in the “Values” column.

The “DDS\_DoorMainEntrance\_I\_DoorContact” tag gives status of the first input on the first controller The “DDS\_DoorMainEntrance\_I\_02” tag gives the status of the second input on the first controller The “DDS\_DoorMainEntrance\_I\_03” tag gives status of the third input on the first controller

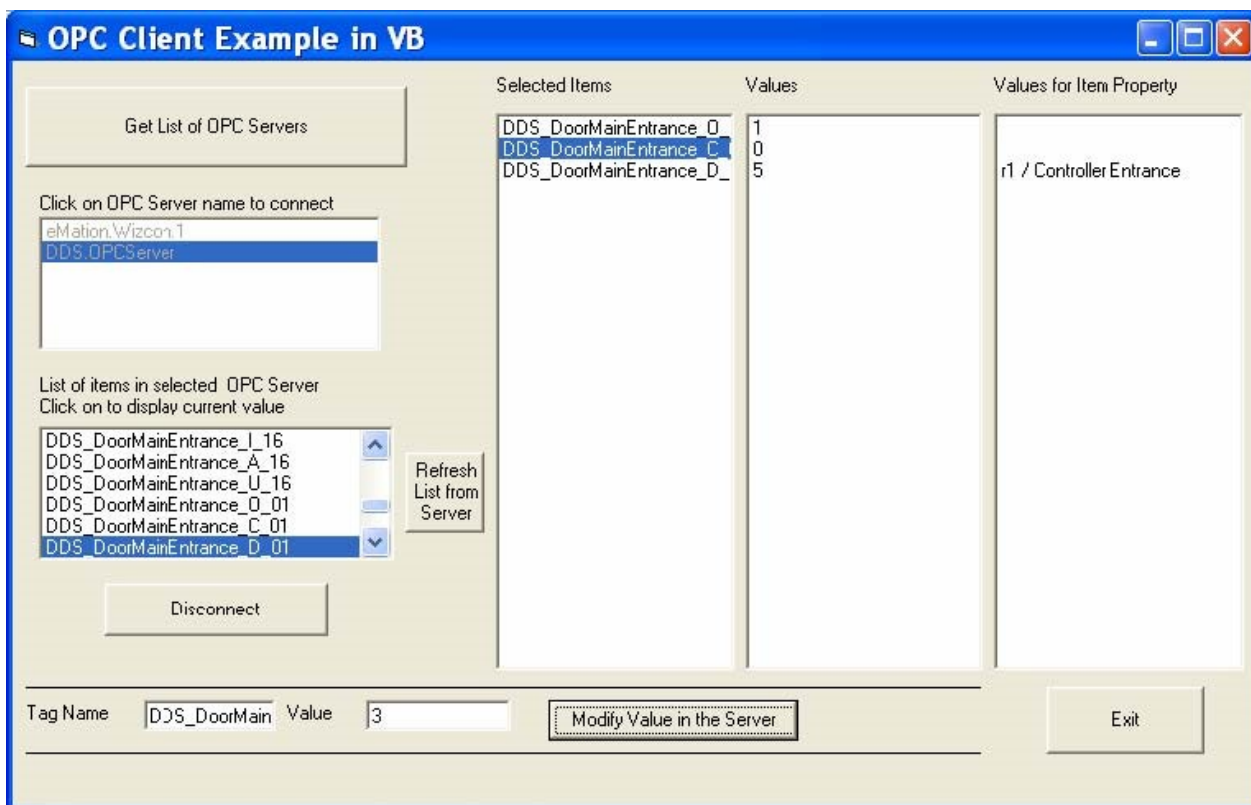
Note that in the “Values for Item Property” column you can see the input name as it is defined within the GuardPoint Pro application.

In the above screen example the value of “DDS\_DoorMainEntrance\_I\_DoorContact” is ‘1’ this means that the state of the first input is now logical ON.

# GuardPoint Pro OPC Server User Guide

## Relay Control Example

In the following screen we will show how to activate a relay for 5 seconds.



A single click on any tag selects it and inserts it to the “Selected Items” column.

In the example above, we have selected 3 outputs tags:

The “DDS\_DoorMainEntrance\_O\_01” tag gives status of the first relay on the first controller

The “DDS\_DoorMainEntrance\_C\_01” tag gives an option to send a command to activate the relay

The “DDS\_DoorMainEntrance\_D\_01” tag gives an option to specify the duration time for relay activation.

(This is relevant in case that “Activate during” type of command was selected. The default value is 5 seconds.)

How to activate a relay:

In the “Selected Items” column, double-click the “DDS\_DoorMainEntrance\_C\_01” tag. The tag will be inserted in the “Tag Name” box on the left bottom of the screen. Put ‘3’ in the “Value” box and click “Modify Value in the Server”.

The following will happen as a result:

GuardPoint Pro application get the new value and will activate the relay for 5 seconds

The value of the tag “DDS\_DoorMainEntrance\_O\_01” changes from ‘0’ to ‘1’

After the 5 seconds duration time the value of “DDS\_DoorMainEntrance\_O\_01” goes back to ‘0’.

# GuardPoint Pro OPC Server User Guide

## Access Grant Example

In the following example we will show how the OPC Client receives an event.

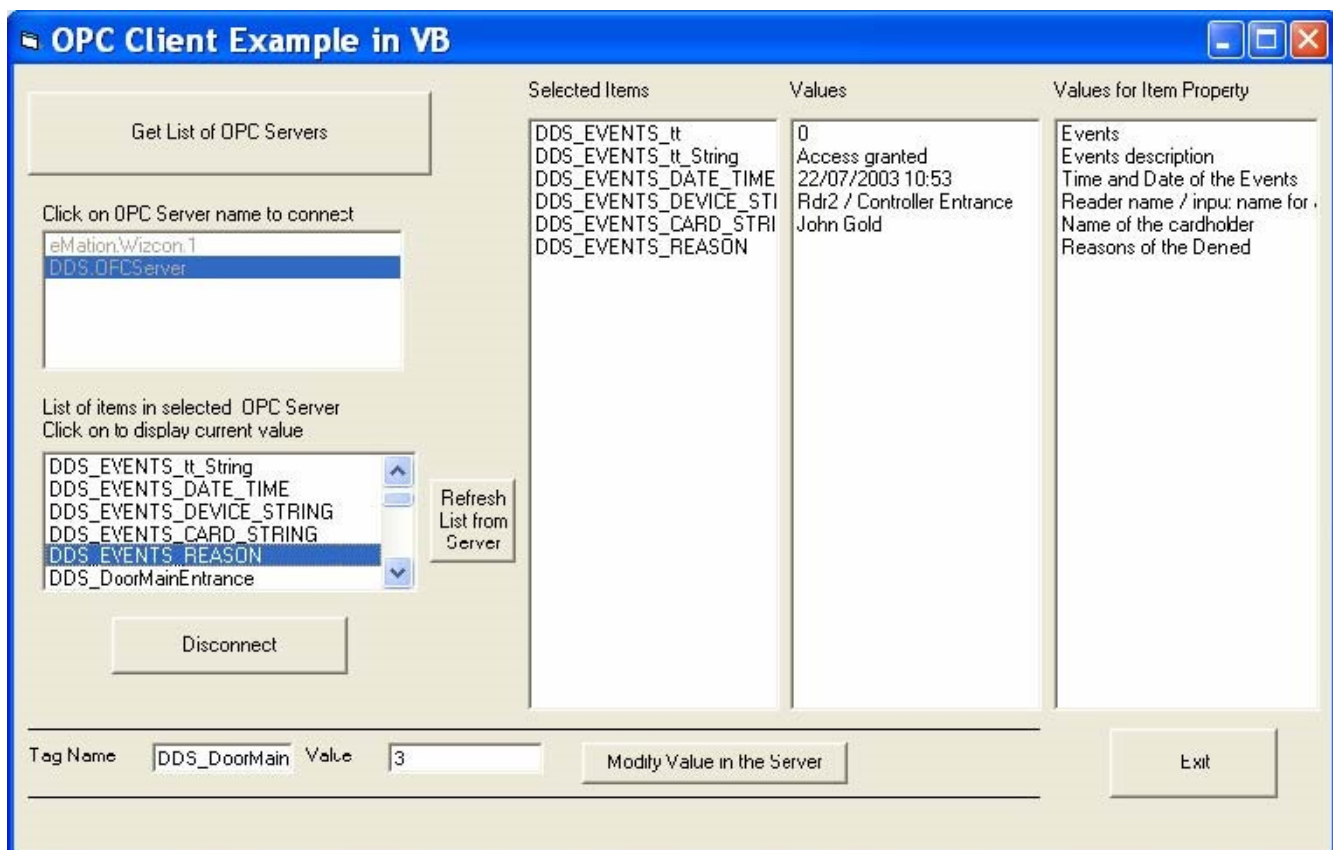
A cardholder named “John Gold” has been created in the GuardPoint Pro application. We have associated a badge to him.

When his badge passes on the reader named “Rdr2 / Controller Entrance” of the Main Entrance Door, the following information are available:

Time and the Date of the event

Reader name

Name of the cardholder



The screenshot shows the 'OPC Client Example in VB' application window. It features a control panel on the left with buttons for 'Get List of OPC Servers', 'Click on OPC Server name to connect', 'List of items in selected OPC Server', 'Refresh List from Server', and 'Disconnect'. The main area is divided into three columns: 'Selected Items', 'Values', and 'Values for Item Property'. The 'Selected Items' column lists various OPC tags, with 'DDS\_EVENTS\_REASON' selected. The 'Values' column shows the current values for these items, including 'Access granted', '22/07/2003 10:53', and 'John Gold'. The 'Values for Item Property' column lists the properties associated with the selected item, such as 'Events description', 'Time and Date of the Events', and 'Name of the cardholder'. At the bottom, there is a 'Tag Name' field containing 'DDS\_DoorMain', a 'Value' field containing '3', and buttons for 'Modify Value in the Server' and 'Exit'.

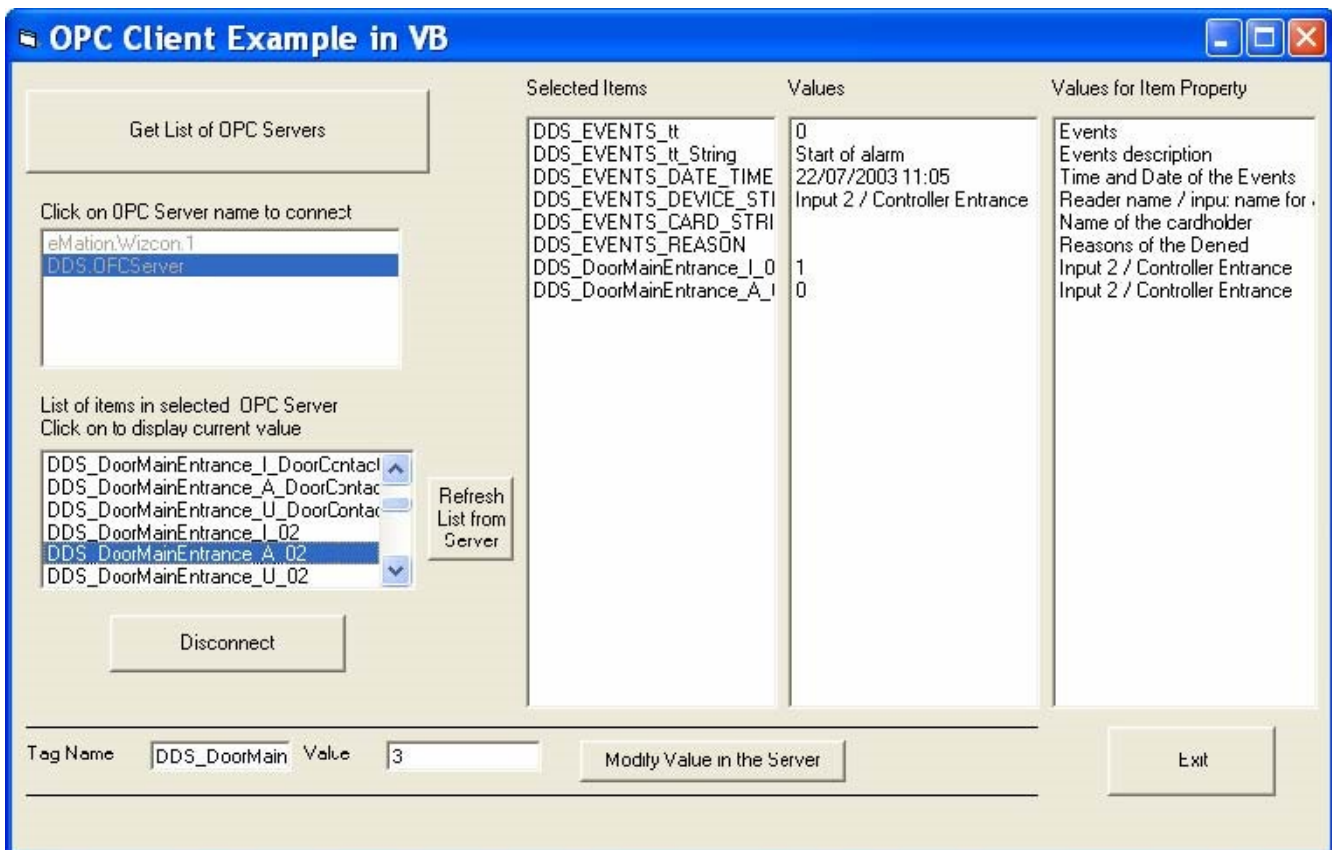
Selected Items	Values	Values for Item Property
DDS_EVENTS_it	0	Events
DDS_EVENTS_it_String	Access granted	Events description
DDS_EVENTS_DATE_TIME	22/07/2003 10:53	Time and Date of the Events
DDS_EVENTS_DEVICE_STI	Rdr2 / Controller Entrance	Reader name / inpu: name for .
DDS_EVENTS_CARD_STRI	John Gold	Name of the cardholder
DDS_EVENTS_REASON		Reasons of the Denied

# GuardPoint Pro OPC Server User Guide

## Input Alarm Example

In the following example we show how an OPC Client receives an alarm event.

The second input named “Input 2 / Controller Entrance” has passed to logical ‘ON’ value. Therefore, the tag “DDS\_DoorMainEntrance\_I\_02” has passed from ‘0’ to ‘1’.



The screenshot shows the 'OPC Client Example in VB' window. On the left, there are controls for connecting to an OPC server (eMationWizcon 1) and a list of items from the server. The 'Selected Items' table shows the following data:

Selected Items	Values	Values for Item Property
DDS_EVENTS_tt	0	Events
DDS_EVENTS_tt_String	Start of alarm	Events description
DDS_EVENTS_DATE_TIME	22/07/2003 11:05	Time and Date of the Events
DDS_EVENTS_DEVICE_STI	Input 2 / Controller Entrance	Reader name / input: name for
DDS_EVENTS_CARD_STRI		Name of the cardholder
DDS_EVENTS_REASON		Reasons of the Denied
DDS_DoorMainEntrance_I_0	1	Input 2 / Controller Entrance
DDS_DoorMainEntrance_A_I	0	Input 2 / Controller Entrance

At the bottom of the window, the 'Tag Name' is 'DDS\_DoorMain' and the 'Value' is '3'. There is a 'Modify Value in the Server' button and an 'Exit' button.